

# FME AI FOR INDUSTRY JAAREVENT



**Quality Control  
met behulp van  
Machine Vision en AI**

**11 december 2024**



# AGENDA

1. Gerben Heinen – Sanovo:  
Egg quality control met behulp van hoge resolutie en hoge data rate vision technologie en deep learning AI modellen
2. Arran Dinsmore – IBM:  
Machine vision demo
3. Vragen & discussie





# SANOVO

TECHNOLOGY GROUP







## OUR VISION

Being the world's leading developer and supplier of technological solutions that ensure affordable proteins for a growing world population.

## OUR MISSION

Being number one global supplier of complete systems in the industry of technology and products to the egg processing world.

Being preferred supplier within the food and feed segments of technology and equipment for liquid treatment and conversion from liquid to powder.

Our mission is prioritizing sustainability, responsibility and compliance in all aspects of our business.



# Facts

---



## FOUNDED IN 1961

The origin of SANOVO TECHNOLOGY GROUP goes back to the 1960s when we were pioneers in egg breaking. Today we have become a successful market leader within our wide range of product categories.



## MORE THAN 660 EMPLOYEES

Our team of skilled professionals is the key to mutual success and trust. Gathered from all over the world, they provide know-how and deliver the right service and solutions in close cooperation with you as a customer.



## ISO 9001:2015 CERTIFICATION

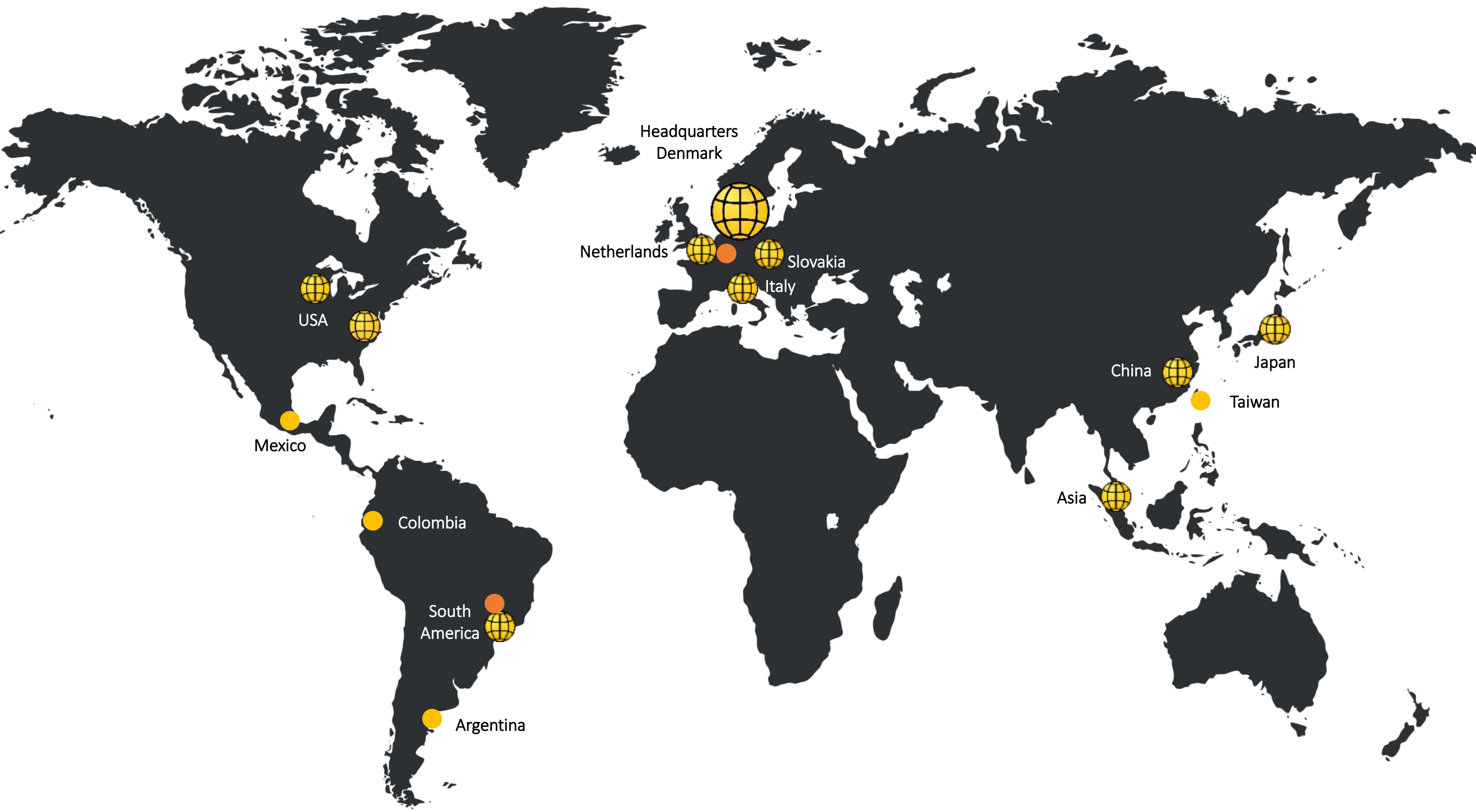
We want to appear as an attractive and trustworthy partner and ensure that our equipment at any time are perceived as quality products. This is ensured through risk management, corrective and preventive actions plus continuous improvements of our quality system.



## FOOD SAFETY

High quality and food safety standards are reflected in everything we do. All components in our equipment are in compliance with regulations of food contact materials.





**Denmark**  
Headquarter & production unit egg processing

**SANOVO TECHNOLOGY PROCESS**

Independent subsidiary for spray drying & pasteurization of industrial applications and SonoSteam.

**SANOVO PROCESS SOLUTIONS**

Enzymes



**USA - RAME-HART**  
Production unit harvesting and inoculation



**Netherlands**  
Production unit grading & packing



**Italy**  
Production unit pasteurization, CIP, SCADA



**SLOVAKIA**  
Production unit



**CHINA**  
Production unit smaller machines and pasteurization



**USA – Brazil – Malaysia - Japan**  
Sales & Service office (Legal entities)



**Argentina – Colombia - Mexico - Taiwan**  
Sales & Service office



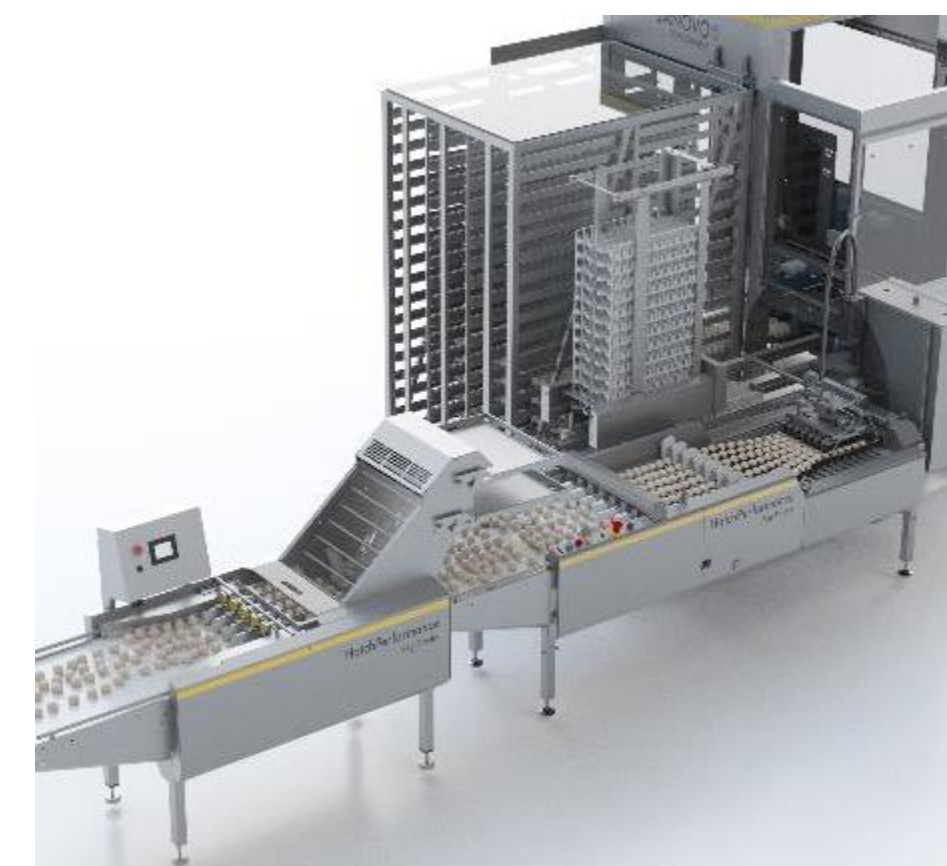
**Ovotrack and Kletek (Netherlands)**



**Fornari (Brazil)**

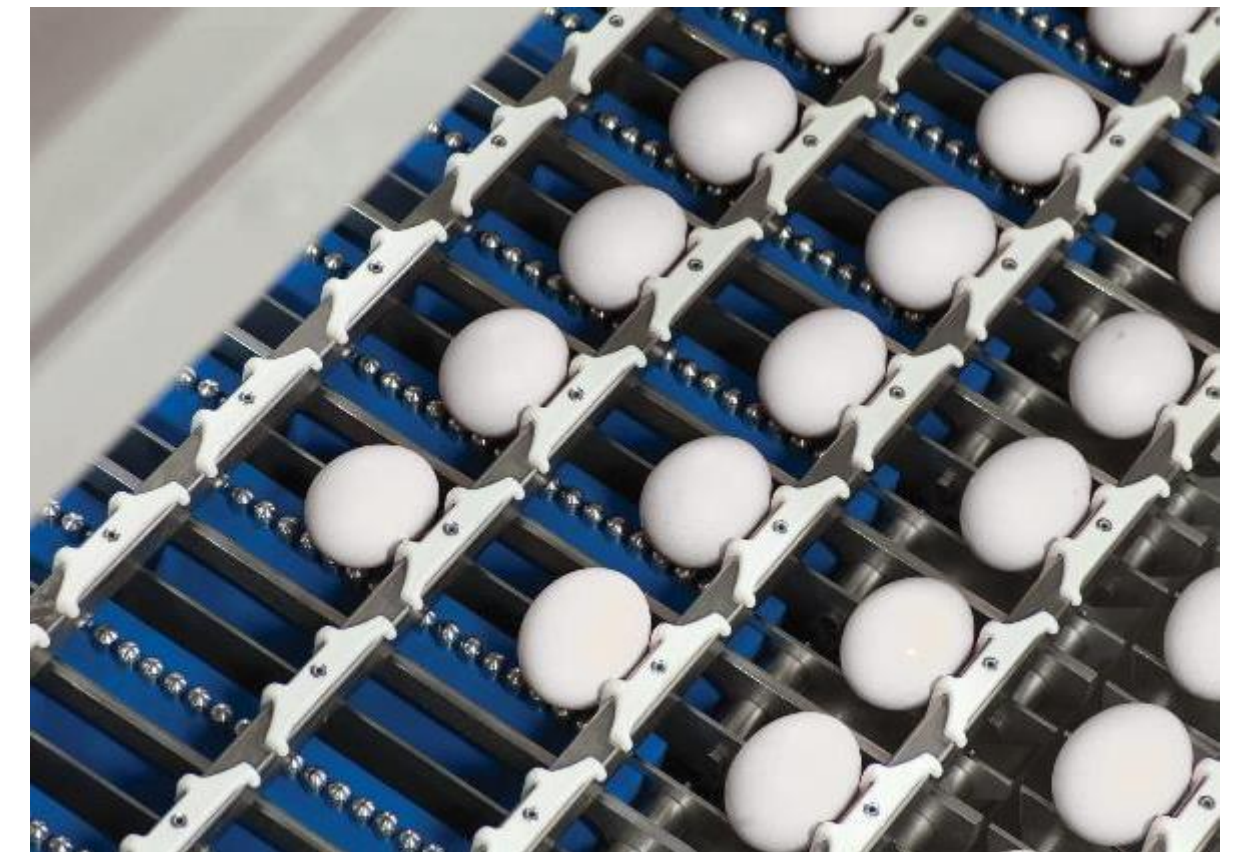


# Packing



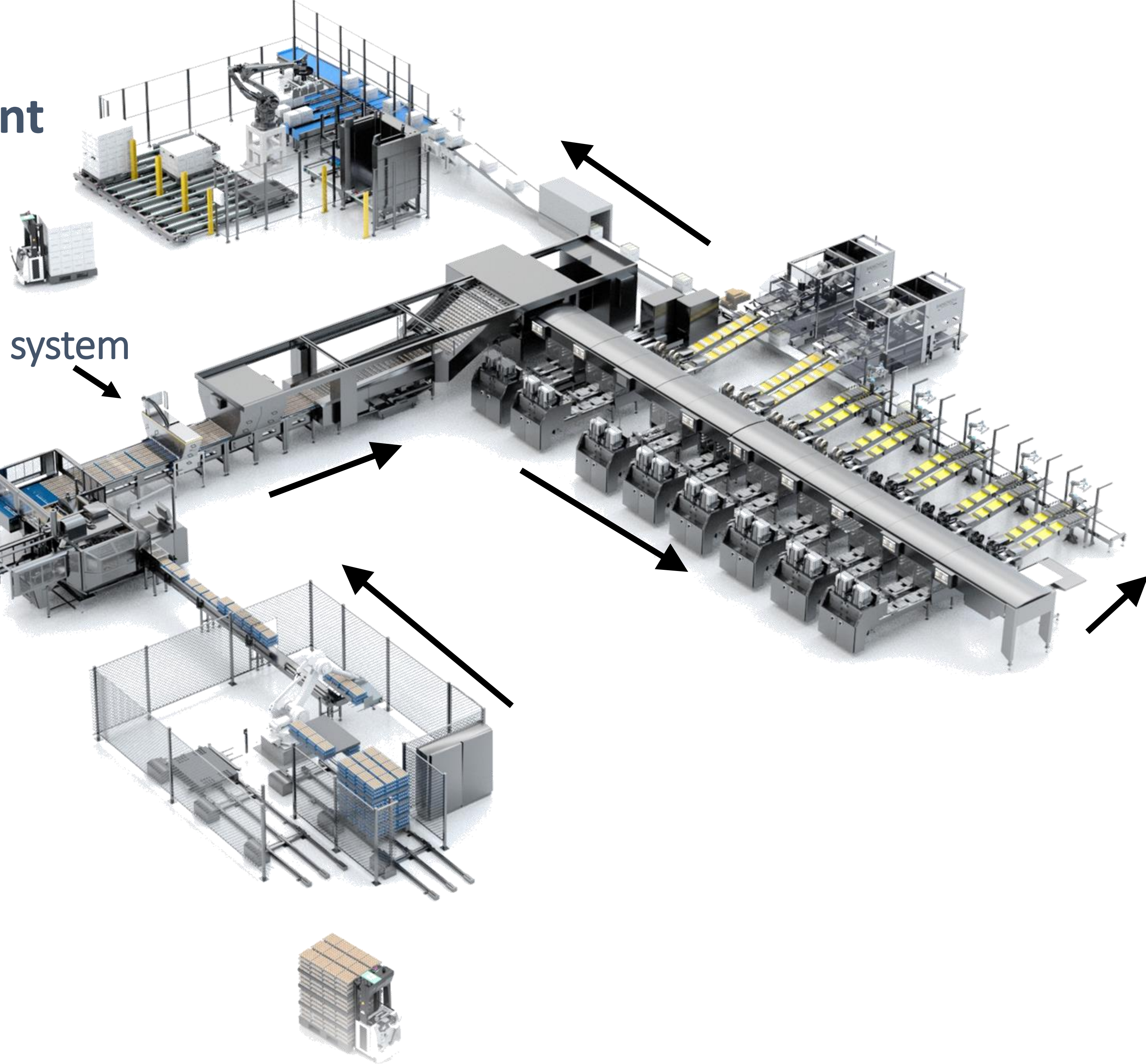


# Grading





 **Grading plant**



Vision AI inspection system



# Current crack detection methods

---



*Current crack detection technologies*

## Principle

- Contact based

## Concerns

- Maintenance costs
- Cleanability



# Vision AI crack detector





# SANOVO VisionAI

TECHNOLOGY GROUP

## Vision-based, intelligent egg crack detection

### HIGH-POWER COMPUTING

The images are being processed with high-computing power on-site, where the deep learning model analyses potential cracks.



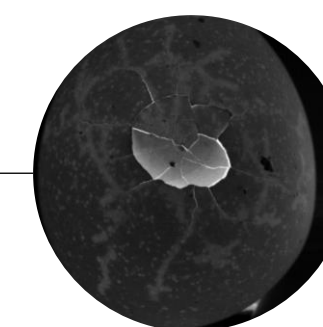
### HIGH-RES CAMERA SETUP

VisionAI Crack Detector uses 4 high-resolution monochrome cameras per egg, 1,2Gb per sec, per camera.



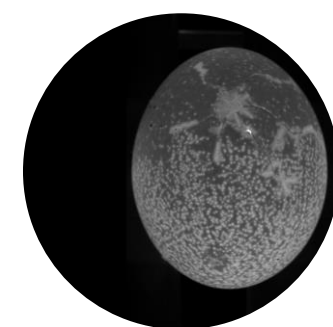
### CRACK CATEGORY CLASSIFICATION

Select your crack category settings and make sure eggs with a large crack are sorted out through the whole egg removal.



### 360° EGG SCAN

Within the cabinet, every individual egg is scanned via 360° Egg Scan to not miss a single spot. Taking a total of 16 images per egg.



### LED LIGHT ILLUMINATION

To ensure the highest quality image the vision cabinet is equipped with light modules developed by SANOV. With this module, each egg, white or brown, will be illuminated in the most optimal way.

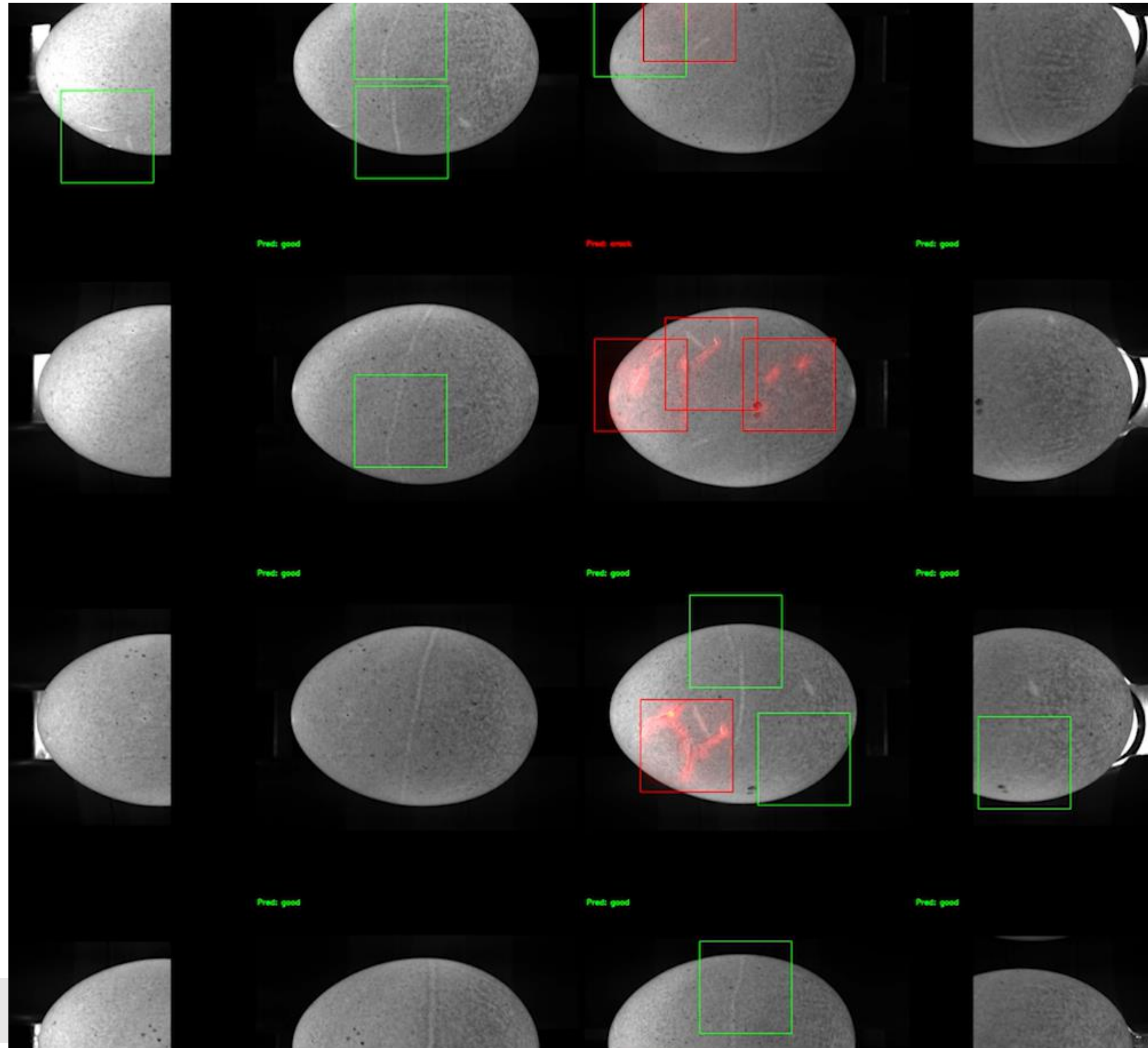




# High-Resolution Camera set-up

16 images per egg

1152 images per second





Deep learning is not magic



Take care of collecting and labelling data



Powerful tool, but stay in control



Solution suppliers were difficult to find





**What is your use-case?**

[WWW.SANOVOGROUP.COM](http://WWW.SANOVOGROUP.COM)





# BEDANKT VOOR JE AANDACHT!

## Meer informatie:

- Gerben Heinen – Sanovo Technology: [GHEN@sanovogroup.com](mailto:GHEN@sanovogroup.com)
- Arran Dinsmore - IBM: [Arran.Dinsmore1@ibm.com](mailto:Arran.Dinsmore1@ibm.com)

## FME Platform AI for Industry:

Patrick Blommerde – FME: [patrick.blommerde@fme.nl](mailto:patrick.blommerde@fme.nl)



# FME AI FOR INDUSTRY JAAREVENT



**Bedankt voor  
je aandacht!**